

## 大功率电感 GDSI2C 系列

### High power inductor GDSI2C series

#### 特征 FEATURES

- ◆ 高载流量
- ◆ 低铁损
- ◆ 频率范围高达 2 MHz
- ◆ 铁氧体磁芯材料

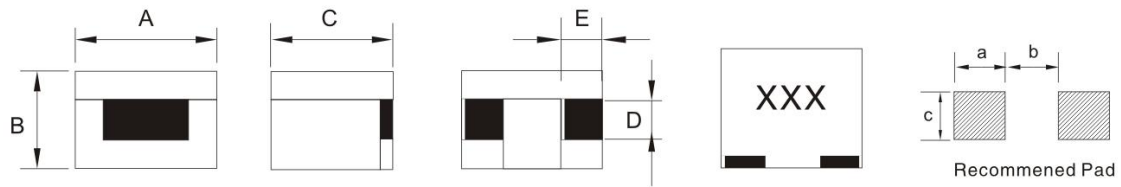
#### 用途 APPLICATIONS

- ◆ 多相和 Vcore 调节器、电压调节器模块(VRM)、服务器和桌面 VRMS 和 EVRD、笔记本电脑和笔记本电脑调节器、数据网络和存储系统、图形卡和电池电源系统负载模块点。



#### 外观尺寸 Extrenal Dimension

注: XXX 表示印字



Unit: mm

Series	A	B	C	D	E	a	b	c
GDSI2C100709	10.7 Max	7.5 Max	9.5 Max	2.8 ± 0.2	2.8 ± 0.3	4.0	4.0	3.8

#### 规格命名 SPECIFICATION NAMED

GDSI2C   100709   -   R15   L   -   R22  
①                    ②                    ③                    ④                    ⑤

- ① 产品系列 Product Symbol
- ② 产品尺寸 Dimensions
- ③ 标称电感量: R15表示0.15 μ H
- ④ 公差: L表示 ± 15%, M表示 ± 20%, N表示 ± 30%
- ⑤ DCR值: R22表示0.22mΩ

**规格特性 SPECIFICATIONS**

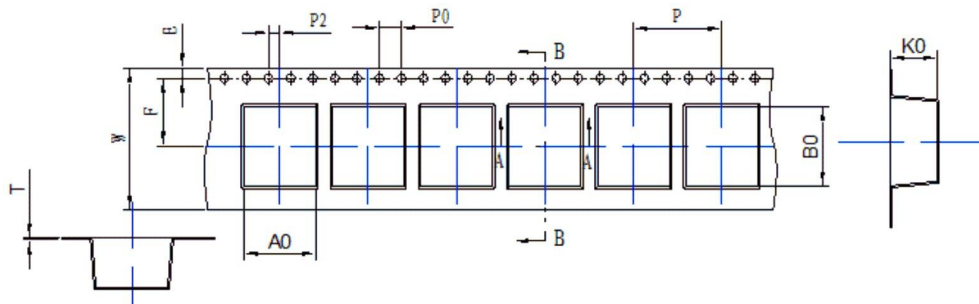
**GDSI2C 100709 系列**

Part Number 型号	Inductance 电感量	DC Resistance 直流电阻	额定电流	
			Saturation Current 饱和电流	Temperature Rise Current 温升电流
Units 单位	nH	mΩ	A	A
GDSI2C100709-R15L-R22	150 ± 15%	0.22 ± 7%	85	45
GDSI2C100709-R18L-R22	180 ± 15%	0.22 ± 7%	70	45
GDSI2C100709-R22L-R22	220 ± 15%	0.22 ± 7%	60	45
GDSI2C100709-R27L-R22	270 ± 15%	0.22 ± 7%	45	45
GDSI2C100709-R32L-R22	320 ± 15%	0.22 ± 7%	35	45
GDSI2C100709-R36L-R22	360 ± 15%	0.22 ± 7%	33	45
GDSI2C100709-R39L-R22	390 ± 15%	0.22 ± 7%	27	45
GDSI2C100709-R47L-R22	470 ± 15%	0.22 ± 7%	21	45

Note:

1. Inductance: 100KHz, 1.0Vrms at 25 °C ambient.
2. DC Resistance: at 25 °C ambient.
3. Temperature Rise Current: DC current for an approximate temperature rise of 40°C without core loss.
4. Saturation current: DC current for approximately 20% rolloff at 25 °C ambient.

**包装规格 PACKAGING DIMENSIONS**



Unit: mm

Series	Ao (mm)	Bo (mm)	Ko (mm)	P (mm)	T (mm)	W (mm)	PCS / REEL
GDSI2C100709	7.7 ± 0.1	11.0 ± 0.1	9.5 ± 0.1	16.0 ± 0.1	0.5 ± 0.05	24.0 ± 0.3	400